

Biliverdin reductase A, 3-296 aa

Human, Recombinant, *E.coli*

Cat. No. ATGP0377

Full name: Biliverdin reductase A

NCBI Accession No.: NP_000703

Synonyms: BLVR, BVR, BVRA

Description: BLVRA, also known as biliverdin reductase A, belongs to the *gfo/idh/mocA* family. This protein is an enzyme that converts biliverdin to bilirubin, converting a double-bond between the second and third pyrrole ring into a single-bond. (Bilirubin + NAD (P) + = biliverdin + NAD (P) H) Recombinant BLVRA protein was expressed in *E.coli* and purified by using conventional chromatography techniques.

Form: Liquid. In 20mM Tris-HCl buffer (pH8.0) containing 10% glycerol

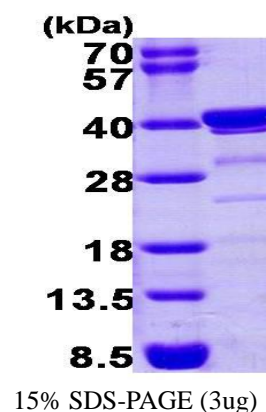
Molecular Weight: 33.3 kDa (295aa), confirmed by MALDI-TOF
(Molecular weight on SDS-PAGE will shift up)

Purity: > 90% by SDS - PAGE

Concentration: 1 mg/ml (determined by Bradford assay)

Endotoxin Level: < 1.0 EU per 1 µg of protein (determined by LAL method)

Biological activity: Specific activity is > 450 pmol/min/ug, and is defined as the amount of enzyme that catalyze the reduction 1.0 pmole of biliverdin of NADPH per minute at pH 8.8 at 25C.



Sequences of aminoacids:

MAEPERKFGV VVVGVGRAGS VRMRDLRNPH PSSAFLNLI G FVSRRELGSI DGVQQI SLED ALSSQEVEVA YICSESSSHE DYIRQFLNAG
KHVLVEYPMT LSLAAQELW ELAEQKGV L HEEHVLLME EF AFLKKEVV GKDLLKGSLL FTAGPLEEER FGFPAFSGIS RLTWLVSLFG
ELSLVSATLE ERKEDQYMKM TVCLETEKKS PLSWIEEKGP GLKRNRYLSF HFKSGSLENV PNVGVNKNIF LKQNI FVQK LLGQFSEKEL
AAEKKRILHC LGLAEEIQKY CCSRK

General references:

Kravets A., *et al.* (2004) J Biol Chem. 279(19):19916-23.

Franklin E., *et al.* (2007) Biochem J. 405(1):61-7.

Storage: Can be stored at +4°C short term (1-2 weeks). For long term storage, aliquot and store at -20°C or -70°C.
Avoid repeated freezing and thawing cycles.

Warning

For research use only. This product is not intended or approved for human, diagnostics or veterinary use

ATGen Co., Ltd.
www.atgenglobal.com