

01 IF=32.086 //

Journals : ADVANCED MATERIALS
Product Name : APC Anti-Mouse CD62L Antibody
Cat.No. : E-AB-F1011E
Title : Lymph Node Targeted Drug Delivery for Effective Immunomodulation to Prolong the Long-Term Survival After Heart Transplantation

03 IF=14.903 //

Journals : Acta Pharmaceutica Sinica B
Product Name : AF/LE Purified Anti-Mouse CD274/PD-L1 Antibody 、 PerCP/Cyanine5.5 Anti-Mouse Ly-6G/Ly-6C (Gr-1) Antibody
Cat.No. : E-AB-F11320 、 E-AB-F1120J
Title : Anti-PD-L1 antibody enhances curative effect of cryoablation via antibody-dependent cell-mediated cytotoxicity mediating PD-L1^{high}CD11b+ cells elimination in hepatocellular carcinoma

05 IF=13.273 //

Journals : CHEMICAL ENGINEERING JOURNAL
Product Name : FITC Anti-Mouse F4/80 Antibody
 PE/Cyanine7 Anti-Mouse CD86 Antibody
 PE Anti-Mouse CD206 Antibody
 FITC Anti-Mouse CD3ε Antibody
Cat.No. : E-AB-F0995C 、 E-AB-F0994H 、 E-AB-F1135D 、 E-AB-F1103C
Title : Engineered stem cell biomimetic liposomes carrying levamisole for macrophage immunity reconstruction in leukemia therapy

07 IF=12.91 //

Journals : MOLECULAR THERAPY
Product Name : FITC Anti-Human CD31 Antibody
Cat.No. : E-AB-F1050C
Title : CRISPR-mediated MECOM depletion retards tumor growth by reducing cancer stem cell properties in lung squamous cell carcinoma

09 IF=10.723 //

Journals : CARBOHYDRATE POLYMERS
Product Name : Purified Anti-Mouse F4/80 Antibody
Cat.No. : E-AB-F0995A
Title : Dopamine-modified chitosan hydrogel for spinal cord injury

02 IF=17.694 //

Journals : Nature Communications
Product Name : FITC anti-mouse/human CD11b antibody
Cat.No. : E-AB-F1081C
Title : Brain milieu induces early microglial maturation through the BAX-Notch axis

04 IF=11.566 //

Journals : Theranostics
Product Name : PE Anti-Mouse F4/80 Antibody、 APC Anti-Mouse CD64 Antibody
Cat.No. : E-AB-F0995D 、 E-AB-F1186E
Title : Mitochondrial STAT3 exacerbates LPS-induced sepsis by driving CPT1a-mediated fatty acid oxidation

06 IF=12.02 //

Journals : Cancer Immunology Research
Product Name : FITC Anti-Human/Mouse CD44 Antibody
 PE Anti-Mouse CD45 Antibody
 FITC Rat IgG2b, κ Isotype Control
 PE Rat IgG2b, κ Isotype Control
Cat.No. : E-AB-F1100C 、 E-AB-F1136D 、 E-AB-F09842C 、 E-AB-F09842D
Title : A Novel Engineered AAV-based Neoantigen Vaccine in Combination with Radiotherapy Eradicates Tumors

08 IF=11.6 //

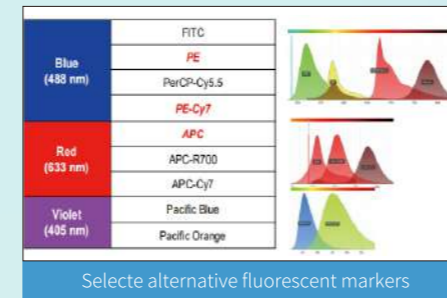
Journals : Theranostics
Product Name : PerCP/Cyanine5.5 Anti-Mouse CD45 Antibody
Cat.No. : E-AB-F1081C
Title : Promising alternatives of CD47 monoclonal antibody: an injectable degradable hydrogel loaded with PQ912 for postoperative immunotherapy effectively blocks CD47-SIRPα signal

10 IF=10.383 //

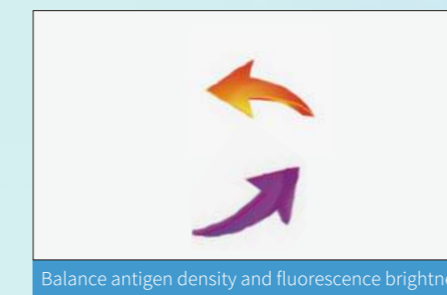
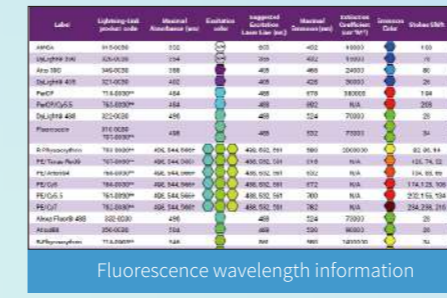
Journals : ACS Applied Materials & Interfaces
Product Name : APC Anti-Mouse CD3 Antibody
Cat.No. : E-AB-F1013E
Title : Self-Activated Cascade Biocatalysis of Glucose Oxidase-Polycation-Iron Nanoconjugates Augments Cancer Immunotherapy

▶ Color Schemes Services

Elabscience® provides customers with professional and free color schemes services. You only need to send your makers (logical relationship or reference, expression level) and basic information of flow cytometer (laser, detection channel, filter information) to our technical support, and we will provide professional and free color schemes services based on your experiment purpose.

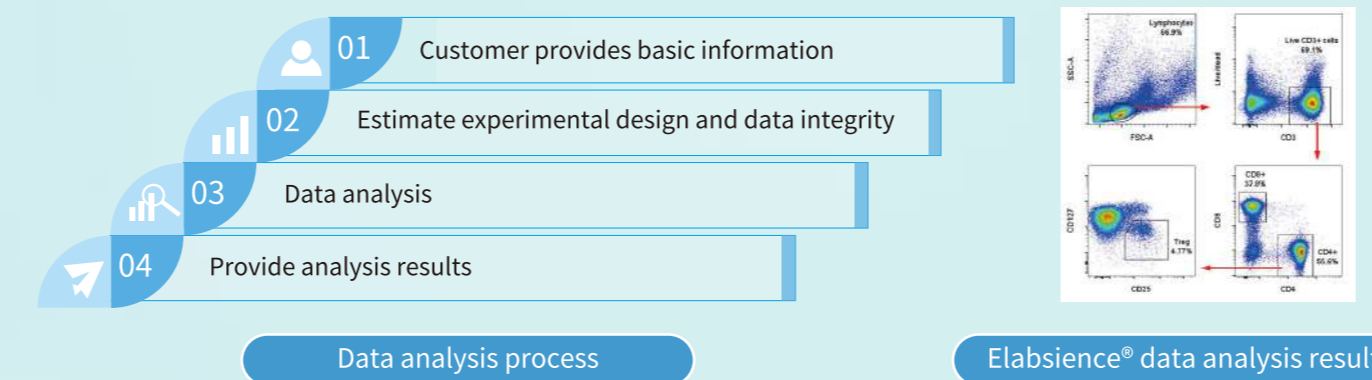


Cell	Marker	Density
lymphocyte	CD3	High
	CD4	High
	CD8	Medium
	CD19	Medium
	CD132	Low



▶ Data Analysis Services

You can also provide the original data of experimental results and logical relationship of markers to technical support. We can provide professional data analysis services for you.



Elabscience Biotechnology Inc.

Tel: 1-240-252-7368
 Fax: 1-240-252-7376

Web: www.elabscience.com
 Email: techsupport@elabscience.com

Flow Cytometry Antibodies

Applicable for All Commercial Flow Cytometer

Excellent Quality
 Selected high-quality FACS monoclonal antibodies and excellent fluorescent labeling technology

Cost-Effective
 Small package, only need \$15~\$60

Fast Delivery
 Common markers are in full stock

- ▶ Markers of Common Cells
- ▶ Classical Detection Markers of Common Cells
- ▶ Elabscience® Flow Cytometry Antibody High IF Publications
- ▶ Elabscience® Featured Services

Elabscience Biotechnology Inc.

Markers of Common Cells

Elabscience® flow cytometry antibodies (FACS) are dedicated to help you efficient identification of immune cells and easily identify cell activation status.

Anti-Human Markers

T cells				B cells				Dendritic cells							
Marker	Clone No.	Fluorochrome	Cat.No.	Marker	Clone No.	Fluorochrome	Cat.No.	Marker	Clone No.	Fluorochrome	Cat.No.				
CD127/IL-7RA	A019D5	APC	E-AB-F1152E	CD138	DL-101	APC	E-AB-F1154E	CD11b	ICRF44	APC	E-AB-F1146E				
		FITC	E-AB-F1152C			FITC	E-AB-F1146C			FITC	E-AB-F1146C				
		PE	E-AB-F1152D			PE	E-AB-F1146D			PE	E-AB-F1146D				
CD134	Ber-ACT35	APC	E-AB-F1153E	CD19	CB19	APC	E-AB-F1004C	CD11c	BU15	APC	E-AB-F1118E				
		FITC	E-AB-F1153C			PE	E-AB-F1004D			FITC	E-AB-F1118C				
		PE	E-AB-F1153D			PE	E-AB-F1004E			PE	E-AB-F1118D				
CD183	G025H7	APC	E-AB-F1156E	CD20	BCA/B20	APC	E-AB-F1045C	CD123	6H6	APC	E-AB-F1117D				
		FITC	E-AB-F1156C			PE	E-AB-F1045D			PE	E-AB-F1117E				
		PE	E-AB-F1156D			PE	E-AB-F1045E			PE	E-AB-F1117F				
CD27	O323	APC	E-AB-F1140E	CD21	BU32	APC	E-AB-F1046C	CD14	M5E2	APC	E-AB-F1209E				
		FITC	E-AB-F1140C			FITC	E-AB-F1046C			FITC	E-AB-F1209C				
		PE	E-AB-F1140D			PE	E-AB-F1046D			PE	E-AB-F1209D				
CD3	OKT3	APC	E-AB-F1140D	CD22	BU59	APC	E-AB-F1047E	CD303	201A	APC	E-AB-F1162E				
		FITC	E-AB-F1001E			FITC	E-AB-F1047C			FITC	E-AB-F1162C				
		PE	E-AB-F1001D			PE	E-AB-F1047D			PE	E-AB-F1162D				
CD4	RPA-T4	APC	E-AB-F1109E	CD24	ML5	APC	E-AB-F1147D	CD40	3A8	APC	E-AB-F1037C				
		FITC	E-AB-F1109C			PE	E-AB-F1147E			PE	E-AB-F1037D				
		PE	E-AB-F1109D			PE	E-AB-F1147F			PE	E-AB-F1037E				
CD45RA	HI100	APC	E-AB-F1052E	CD27	O323	APC	E-AB-F1140E	CD80	2D10	APC	E-AB-F0993E				
		FITC	E-AB-F1052C			FITC	E-AB-F1140C			FITC	E-AB-F0993C				
		PE	E-AB-F1052D			PE	E-AB-F1140D			PE	E-AB-F0993D				
CD45RO	UCHL1	APC	E-AB-F1139E	CD38	HIT2	APC	E-AB-F1058E	CD86	BU63	APC	E-AB-F1012E				
		FITC	E-AB-F1139C			FITC	E-AB-F1058C			FITC	E-AB-F1012C				
		PE	E-AB-F1139D			PE	E-AB-F1058D			PE	E-AB-F1012D				
CD62L	DREG56	APC	E-AB-F1232E	CD40	3A8	APC	E-AB-F1037D	HLA-DR	L243	APC	E-AB-F1111E				
		FITC	E-AB-F1051C			PE	E-AB-F1037E			FITC	E-AB-F1111C				
		PE	E-AB-F1051D			PE	E-AB-F1037F			PE	E-AB-F1111D				
CD8	OKT-8	APC	E-AB-F1110E	CD86	BU63	APC	E-AB-F1012E	Stem cells							
		FITC	E-AB-F1110C			FITC	E-AB-F1012C	Marker	Clone No.	Fluorochrome	Cat.No.				
		PE	E-AB-F1110D			PE	E-AB-F1012D	CD29	TS2/16.2.1	APC	E-AB-F1049E				
IFN-γ	B27	APC	E-AB-F1196E	IgD	IA6-2	APC	E-AB-F1171E	FITC	E-AB-F1049C	CD44	P2A1	APC	E-AB-F1038E		
		FITC	E-AB-F1196C			PE	E-AB-F1171D	PE	E-AB-F1049D			FITC	E-AB-F1171C		
		PE	E-AB-F1196D			PE	E-AB-F1171E	PE	E-AB-F1038E			PE	E-AB-F1171D		
IL-10	JES3-9D7	APC	E-AB-F1198E	IgM	MHM-88	APC	E-AB-F1172E	CD66b	43A3	APC	E-AB-F1038D	CD73	AD2	APC	E-AB-F1242E
		FITC	E-AB-F1198C			FITC	E-AB-F1172C			FITC	E-AB-F1038C			FITC	E-AB-F1242C
		PE	E-AB-F1198D			PE	E-AB-F1172D			PE	E-AB-F1038E			PE	E-AB-F1242D
IL-17A	BL168	APC	E-AB-F1173E	NK cells				Platelet							
		FITC	E-AB-F1173C	Marker	Clone No.	Fluorochrome	Cat.No.	Marker	Clone No.	Fluorochrome	Cat.No.				
		PE	E-AB-F1173D	CD122/IL-2RB	TU27	APC	E-AB-F1151E	CD41	HIP8	APC	E-AB-F1088E				
IL-2	MQ1-17H12	APC	E-AB-F1200E	CD16	CB16	FITC	E-AB-F1151C	CD27	O323	FITC	E-AB-F1203E	CD56	MEM188	APC	E-AB-F1006E
		FITC	E-AB-F1200C			PE	E-AB-F1151D			PE	E-AB-F1006D			PE	E-AB-F1006E
		PE	E-AB-F1200D			PE	E-AB-F1006D			PE	E-AB-F1006E			PE	E-AB-F1006F
IL-21	3A3-N2	APC	E-AB-F1202E	CD57	HMK-1	FITC	E-AB-F1202C	CD117	104D2	FITC	E-AB-F1067E	CD117	104D2	APC	E-AB-F1150E
		PE	E-AB-F1202D			PE	E-AB-F1067D			FITC	E-AB-F1150C			PE	E-AB-F1150D
		APC	E-AB-F1203E			APC	E-AB-F1074E			PE	E-AB-F1150D			PE	E-AB-F1150D
IL-4	MP4-25D2	FITC	E-AB-F1203C	CD15	HI98	PE	E-AB-F1203D	CD11b	ICRF44	PE	E-AB-F1079E	CD11b	ICRF44	APC	E-AB-F1146E
		PE	E-AB-F1203D			APC	E-AB-F1074C			APC	E-AB-F1146C			APC	E-AB-F1146C
		APC	E-AB-F1145E			PE	E-AB-F1074D			PE	E-AB-F1146D			PE	E-AB-F1146D
TCR γ/δ	B1	APC	E-AB-F1145E	CD13	B-F10	FITC	E-AB-F1145C	CD15	6C5	APC	E-AB-F1083E	CD13	6C5	APC	E-AB-F1083E
		FITC	E-AB-F1145C			PE	E-AB-F1083D			PE	E-AB-F1083D			PE	E-AB-F1083D
		PE	E-AB-F1145D			PE	E-AB-F1083E			PE	E-AB-F1083E			PE	E-AB-F1083E
Macrophage/Monocyte				Granulocyte				Endothelial cells							
Marker	Clone No.	Fluorochrome	Cat.No.	Marker	Clone No.	Fluorochrome	Cat.No.	Marker	Clone No.	Fluorochrome	Cat.No.	Marker	Clone No.	Fluorochrome	Cat.No.
CD11b	ICRF44	APC	E-AB-F1146E	CD117	104D2	APC	E-AB-F1150E	CD31	158-2B3	APC	E-AB-F1050E	CD117	2B8	APC	E-AB-F1092E
		FITC	E-AB-F1146C			FITC	E-AB-F1150C			FITC	E-AB-F1050C			FITC	E-AB-F1092C
		PE	E-AB-F1146D			PE	E-AB-F1150D			PE	E-AB-F1050D			PE	E-AB-F1092D
CD11c	BU15	APC	E-AB-F1118E	CD123	6H6	APC	E-AB-F1117D	CD45	30-F11	APC	E-AB-F1136E	CD11b	M1/70	APC	E-AB-F1081E
		FITC	E-AB-F1118C			FITC	E-AB-F1117C			FITC	E-AB-F1136C			FITC	E-AB-F1081C
		PE	E-AB-F1118D			PE	E-AB-F1117E			PE	E-AB-F1136D			PE	E-AB-F1081D
CD14	M5E2	APC	E-AB-F1209E	CD13	B-F10	APC	E-AB-F1074E	CD326	9C4	APC	E-AB-F1163E	CD11c	N418	APC	E-AB-F0991E
		FITC	E-AB-F1209C			FITC	E-AB-F1074C			FITC	E-AB-F1163C			FITC	E-AB-F0991C
		PE	E-AB-F1209D			PE	E-AB-F1074D			PE	E-AB-F1163D			PE	E-AB-F0991D
CD16	CB16	APC	E-AB-F1005E	CD15	HI98	APC	E-AB-F1079E	CD44	P2A1	APC	E-AB-F1038E	CD11c	N418	APC	E-AB-F0991E
		FITC	E-AB-F1005C			FITC	E-AB-F1079C			FITC	E-AB-F1038C			FITC	E-AB-F0991C
		PE	E-AB-F1005D			PE	E-AB-F1079D			PE	E-AB-F1038D			PE	E-AB-F0991D
CD80	2D10	APC	E-AB-F1232E	CD33	6C5	APC	E-AB-F1083E	CD4	P2A1	APC	E-AB-F1083E	CD11c	N418	APC	E-AB-F0991E
		FITC	E-AB-F1232C			FITC	E-AB-F1083C			FITC	E-AB-F1083C			FITC	E-AB-F0991C
		PE	E-AB-F1232D			PE	E-AB-F1083D			PE	E-AB-F1083D			PE	E-AB-F0991D
CD86	BU63	APC	E-AB-F1012E	CD66b	G10F5	APC	E-AB-F1267E	CD4	P2A1	APC	E-AB-F1083E	CD11c	N418	APC	E-AB-F0991E
		FITC	E-AB-F1012C			FITC	E-AB-F1267C			FITC	E-AB-F1083C			FITC	E-AB-F0991C
		PE	E-AB-F1012D			PE	E-AB-F1267D			PE	E-AB-F1083D			PE	E-AB-F0991D
HLA-DR	L243	APC	E-AB-F1111E	CD66b	G10F5	APC	E-AB-F1267E	CD4	P2A1	APC	E-AB-F1083E	CD11c	N418	APC	E-AB-F0991E
		FITC	E-AB-F1111C			FITC	E-AB-F1267C			FITC	E-AB-F1083C			FITC	E-AB-F0991C
		PE	E-AB-F1111D			PE	E-AB-F1267D			PE	E-AB-F1083D			PE	E-AB-F0991D

Anti-Mouse Markers

T cells				B cells				Dendritic cells						
Marker	Clone No.	Fluorochrome	Cat.No.	Marker	Clone No.	Fluorochrome	Cat.No.	Marker	Clone No.	Fluorochrome	Cat.No.			
CD127	A7R34	APC	E-AB-F1023E	CD19	1D3	APC	E-AB-F0986E	CD11b	M1/70	APC	E-AB-F1081E			
		FITC	E-AB-F1023C			FITC	E-AB-F0986C			FITC	E-AB-F1081C			
		PE	E-AB-F1023D			PE	E-AB-F0986D			PE	E-AB-F1081D			
CD183	CXCR3-173	APC	E-AB-F1114E	CD1d	19G11	APC	E-AB-F1032E	CD11c	N418	APC	E-AB-F0991E			
		FITC	E-AB-F1114C			FITC	E-AB-F1032C			FITC	E-AB-F0991C			
		PE	E-AB-F1114D			PE	E-AB-F1032D			PE	E-AB-F0991D			
CD25	PC-61.5.3	APC	E-AB-F1102E	CD23	B3B4	APC	E-AB-F1178E	CD40	FGK4.5/FGK45	APC	E-AB-F1028E			
		FITC	E-AB-F1102C			FITC	E-AB-F1178C			FITC	E-AB-F1028C			
		PE	E-AB-F1102D			PE	E-AB-F1178D			PE	E-AB-F1028D			
CD279/PD-1	29F.1A12	APC	E-AB-F1131E	CD24	M1/69	APC	E-AB-F1179E	CD45	30-F11	APC	E-AB-F1136E			
		FITC	E-AB-F1131C			FITC	E-AB-F1179C			FITC	E-AB-F1136C			
		PE	E-AB-F1131D			PE	E-AB-F1179D			PE	E-AB-F1136D			
CD3	17A2	APC	E-AB-F1013E	CD45	30-F11	APC	E-AB-F1136E	CD45R/B220	RA3.3A 1/6.1	APC	E-AB-F1112E			
		FITC	E-AB-F1013C			FITC	E-AB-F1136C			FITC	E-AB-F1112C			
		PE	E-AB-F1013D			PE	E-AB-F1136D			PE	E-AB-F1112D			
CD366/Tim-3	RMT3-23	APC	E-AB-F1192E	CD45R/B220	RA3.3A 1/6.1	APC	E-AB-F1112E	CD80	16-10A1	APC	E-AB-F0992E			
		FITC	E-AB-F1192C			FITC	E-AB-F1112C			FITC	E-AB-F0992C			
		PE	E-AB-F1192D			PE	E-AB-F1112D			PE	E-AB-F0992D			
CD3e	145-2C11	APC	E-AB-F1103E	CD5	53-7.3	APC	E-AB-F1185D	CD86	GL-1	APC	E-AB-F0994E			
		FITC	E-AB-F1103C			PE	E-AB-F1185D			FITC	E-AB-F0994C			
		PE	E-AB-F1103D			PE	E-AB-F0990E			PE	E-AB-F0994D			
CD4	GK1.5	APC	E-AB-F1097E	I-A/I-E	M5/114	APC	E-AB-F0990E	I-A/I-E	M5/114	APC	E-AB-F0990E			
		FITC	E-AB-F1097C			FITC	E-AB-F0990C			FITC	E-AB-F0990C			
		PE	E-AB-F1097D			PE	E-AB-F0990D			PE	E-AB-F0990D			
CD45	30-F11	APC	E-AB-F1136E	IgD	11-26c.2a	APC	E-AB-F1189E	IgM	RMM-1	APC	E-AB-F1189E			
		FITC	E-AB-F1136C			FITC	E-AB-F1189C			FITC	E-AB-F1190C			
		PE	E-AB-F1136D			PE	E-AB-F1189D			PE	E-AB-F1190D			
CD45.1	A20	APC	E-AB-F1184E	NK cells	Marker	Clone No.	Fluorochrome	Cat.No.	CD105	MJ7/18	APC	E-AB-F1233E		
		FITC	E-AB-F1184C								FITC	E-AB-F1233C	FITC	E-AB-F1233D
		PE	E-AB-F1184D								PE	E-AB-F1233D	PE	E-AB-F1233E
CD62L	Mel14	APC	E-AB-F1011E	CD45	30-F11	APC	E-AB-F1136E	CD117	2B8	APC	E-AB-F1092E			
		FITC	E-AB-F1011C			FITC	E-AB-F1136C			FITC	E-AB-F1092C			
		PE	E-AB-F1011D			PE	E-AB-F1136D			PE	E-AB-F1092D			
CD8a	53-6.7	APC	E-AB-F1104E	CD45.1	A20	APC	E-AB-F1184E	CD150	TC15-12F12.2	APC	E-AB-F1177E			
		FITC	E-AB-F1											