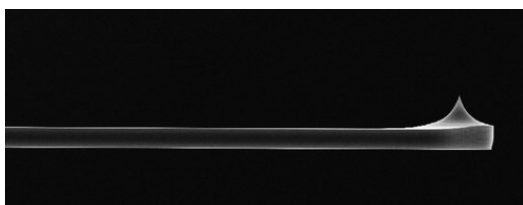
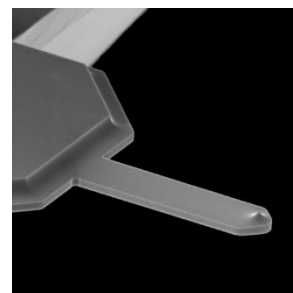
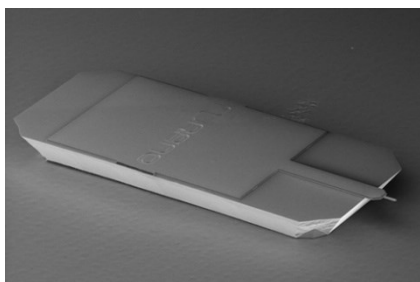


## SPARK 150 Pt



### カンチレバーの仕様

Parameter	Nominal	Range
Spring constant (N/m)	18	10-26
Resonant frequency (kHz)	150	130-170
Shape	Rectangular	
Length ( $\mu\text{m}$ )	225	223-227
Width ( $\mu\text{m}$ )	30	28-32
Thickness ( $\mu\text{m}$ )	4.5	4.0-5.0
Material	Silicon (n-type, Antimony)	
Resistivity ( $\Omega\text{cm}$ )	0.02	0.015-0.025

### チップの仕様

Parameter	Nominal	Range
Radius (nm)	5	<10
Height ( $\mu\text{m}$ )	6	5-8
Set back ( $\mu\text{m}$ )	7.5	6.5-8.5
Shape	Conical	
Cone Angle ( $^\circ$ )	25	15-40
Material	Silicon (n-type, Antimony)	
Resistivity ( $\Omega\text{cm}$ )	0.02	0.015-0.025

### コーティングの仕様

Frontside/Tip	5nm Ti	40nm Pt
Backside/Reflective	5nm Ti	40nm Pt