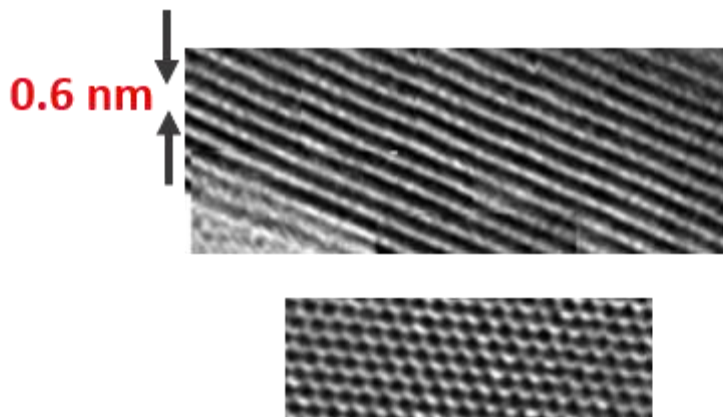


WX₂ single crystals



- High crystallinity
- 12 years of growth optimization to reach 1 part in 10000 defects or less
- High photoluminescence and electronic mobility
- Years of reproducibility
- No vacancy or amorphization

Crystal size	3-5 mm in size
Dopants	n-type $\sim 10^{17-18} \text{cm}^{-3}$ (Re or Au doping) (other dopants on request)
Material properties	2.02 eV emission (300K), direct gap semiconductor
Crystal structure	Hexagonal phase
Unit cell parameters	$a = b = 0.317 \text{ nm}$, $c = 1.230 \text{ nm}$, $\alpha = \beta = 90^\circ$, $\gamma = 120^\circ$
Growth method	[Default] Flux zone (no halide contamination) defect free [Optional CVT]: Contains Br ₂ , Cl ₂ , TeCl ₄ , and other halides
Purity	99.9999 % confirmed