

PolyAn Blue Multiplex Beads

PolyAn offers a set of 10 bead populations (10-plex) that can be distinguished by different fluorescence intensities of our PolyAn Blue dye.

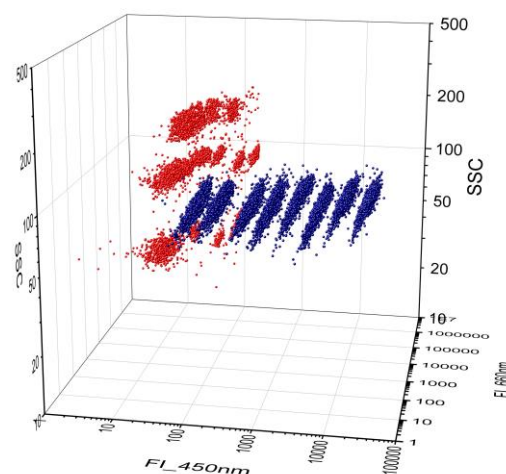
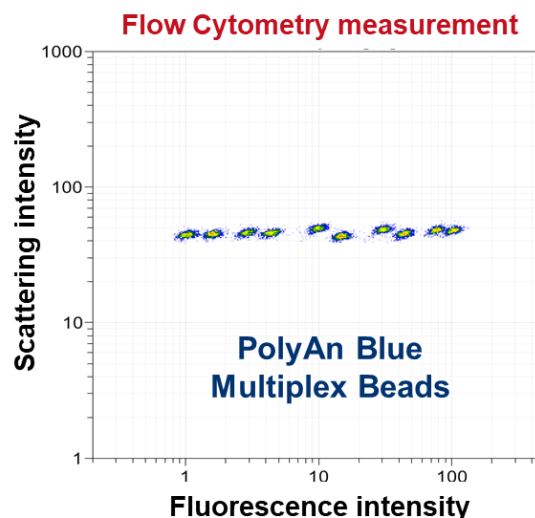
The PolyAn Blue Multiplex Beads are designed for detection in the DAPI channel (Excitation 350-400 nm, Emission 400-480 nm). This leaves other commonly used detections channels (e.g. FITC, PE, or APC) free for the use of various reporter dyes, and enables a highly flexible multiparametric detection.

PolyAn's Blue Multiplex Beads provide a platform for the design of multiplexed assays that can be run on a wide range of standard flow cytometers.

Customized Multiplex Bead Mixtures

Each bead population of the PolyAn Blue and PolyAn Red4 Multiplex Beads can be combined independently to create a Multiplex Bead mixture that is most suitable for your application. The combination of PolyAn Blue and Red4 Multiplex Beads leaves the PE channel free for the detection of binding events.

3D presentation for the simultaneous detection of a mixture of PolyAn Blue Beads and PolyAn Red4 Beads using a BC CytoFlex LX flow cytometer.



Products list

Product ID	Surface chemistry	Bead size	Populations
107 50 005	3D-Carboxy	5.8 µm	10 peaks
107 52 005	Streptavidin	5.8 µm	10 peaks
107 53 005	Neutravidin	5.8 µm	10 peaks
107 56 005	Protein A/G	5.8 µm	10 peaks
107 54 005	3D-Aldehyde	5.8 µm	10 peaks
107 51 005	3D-Alkyne	5.8 µm	10 peaks
107 55 005	3D-Azide	5.8 µm	10 peaks
107 57 005	3D-DBCO	5.8 µm	10 peaks
107 58 005	3D-MTZ	5.8 µm	10 peaks

Other multiplex sets with different spectral properties (excitation/emission wavelength) as well as custom modifications with antibodies, peptides, or oligonucleotides are available upon request.

High performance consumables

PolyAn is a nanotechnology company specialized in Molecular Surface Engineering. Since 1996 PolyAn develops and manufactures consumables for multiplex diagnostic and LifeScience research. This includes the broadest portfolio of microarray consumables (slides, plates) on the market.

PolyAn also offers functionalized plates for immunoassays (e.g. ELISA) and has developed a wide range of fluorescence encoded PMMA microparticles (beads) for multiplex bead assays and flow cytometry. Our calibration tools are widely used in fluorescence imaging systems.

Ordering information

We are looking forward to your telephone orders and technical enquiries at our Customer Service and Technical Service Department Monday – Friday. Office hours for telephone enquiries are 9:00 AM to 6:00 PM (Central European Time).

Distributors

USA, Canada, Mexico	AutoMate Scientific, Inc. (USA) Tel.: +1 510 845 6283 Email: info@autom8.com	Japan	Filgen, Inc. Tel.: +81 52 624 4388 Email: biosupport@filgen.jp
	axiVEND (Microarray products only) Tel.: +1.833 294 8363 Email: info@axivend.com		Waki Company Japan Co., Ltd. Tel.: +81 3 5876 4033 Email: sales@waki-bg.jp
China	APG Bio, LTD Tel.: +86 21 545 835 65 Email: info@apgbio.com	Korea	Kyongshin Scientific Co., Ltd. Tel.: +82 2 576 6303 Email: kss@kyongshin.co.kr
France	Proteigene SARL Tel.: +33 (0)2 32 64 45 45 Email: dutriat@proteigene.com	Netherlands, Belgium, Luxemburg	Bio-Connect B.V. Tel.: +31 (0)26 326 4450 Email: info@bio-connect.nl
Great Britain	Stratech Scientific Ltd Tel.: +44 (0)163 878 2600 Email: sales@stratech.co.uk		Distrilab B.V. (Bead products only) Tel.: + 31 33 494 7834 Email: info@distrilab.nl
India	Biolinkk Tel.: +91 11 4503 5753 Email: customerservice@biolinkk.com	Taiwan	Bio-cando Inc., Taiwan Tel.: +886 3 211 8079 Email: info@bio-cando.com.tw
Israel	MS Biotec Applications Tel.: +972 8 936 70 01 Email: ms.biotec.app@gmail.com	Singapore, Malaysia, Indonesia, Vietnam	Sciencewerke Pte. Ltd. (Singapore) Tel.: +65 6777 1045 Email: jason@sciencewerke.com
Italy	K.F. Technology Srl. Tel.: +39 (0)6 454 34 179 Email: fabrizio@kftechnology.it		